



Bathing establishment Fact Sheet

Bathhouse name	Il Cavallone
Address	Via S. Bernardini 722
City	Lido di Camaiore (LU)
Contacts	+39 0584 610554
Website	www.bagnocavallone.eu/en

TESTED BY: [Handy Superabile - Social Promotion Association](#) in summer 2023

Please note The following information refers to the verification date shown at the bottom of each card. **The Association** is not responsible for any significant changes made by the property after the visit.

Summary

Bathing establishment Fact Sheet	1
Arrival at the facility	2
Private/public parking.....	2
Pathway from the parking lot to the main entrance	3
Reception.....	3
Bar/restaurant	4
Internal Pathways and common services.....	5
Internal Pathways	5
Toilet and shower accessible to guests with reduced mobility	6
Changing room	7
Beach.....	8
Children's play area	10
Swimming pool	10
Doctors' Offices/Healthcare Facilities	10

Project carried out with the contribution of the



Project promoted by



Regione Toscana

Arrival at the facility

Private/public parking

Presence of private parking	YES
Presence of parking space reserved for people with disabilities	NO
Type of parking surface	GRAVEL
Public parking nearby	YES
	



Project carried out with the contribution of the



Presidenza del
Consiglio dei Ministri
Ministro per la disabilità



Pathway from the parking lot to the main entrance

Pathway from the car park to the entrance	by ramp length 460 cm, width 47 cm, slope 3.7%
There are markers and tactile maps	NO
Usable door/entrance width	more than 90 cm
	

Reception

Umbrella booking system	<input type="checkbox"/> Via web <input checked="" type="checkbox"/> By phone <input checked="" type="checkbox"/> On-site
Presence of multilingual staff	YES
Presence of plant plan with key to services available	NO
Presence of visuo-tactile map	NO



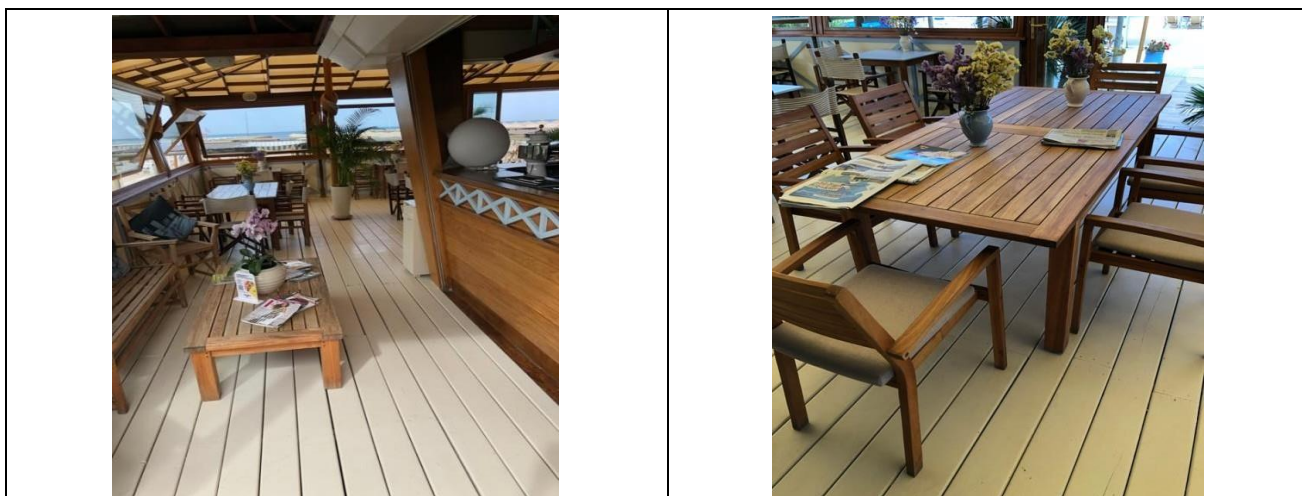


Bulletin board/information panels at an average height of 130 cm in a well-lit area and font size at least 14 dpi with a contrast ratio greater than 4.5:1	NO
The staff attended training courses on welcoming people with different disabilities	NO

Bar/restaurant

Type of venue	Bar/restaurant
Access to the premises	by ramp length 460 cm, width 47 cm, slope 3.7%
Usable door/entrance width	more than 90 cm
Bar counter	more than 100 cm
Types of tables	4-legged
Space underneath the tables from the floor	cm 65
Multilingual menu	YES
Menus with large print fonts	YES
Braille menu	NO
Table service for people with disabilities	YES
Availability of gluten-free food	<input checked="" type="checkbox"/> bread <input type="checkbox"/> pasta <input type="checkbox"/> biscuits <input checked="" type="checkbox"/> ice cream <input checked="" type="checkbox"/> Pre-packaged foods





Internal Pathways and common services

Internal Pathways



Indicate whether the pathways connecting the entrance to the beach are flat or with ramps in addition to those already described

flat paths with a ramp 460 cm long and 47 cm wide with a 3.7% slope







Toilet and shower accessible to guests with reduced mobility

Number of toilets accessible/usable by guests with reduced mobility	1
Access to the premises	with a step height of 1.3 cm
Usable width of the entrance door	cm 82
Toilet height	cm 46
Open front toilet seat	YES
Support handles ABSENT	Choose an item.
Flexible hand shower at the side of the toilet	NO
Free space on the sides of the toilet	left cm 24 right more than 90 cm frontal more than 90 cm
Electric doorbell/phone	YES
Washbasin with space underneath for wheelchair	more than 70 cm
Height from the ground on the bottom edge of the mirror	cm 122
Baby changing table	NO
	



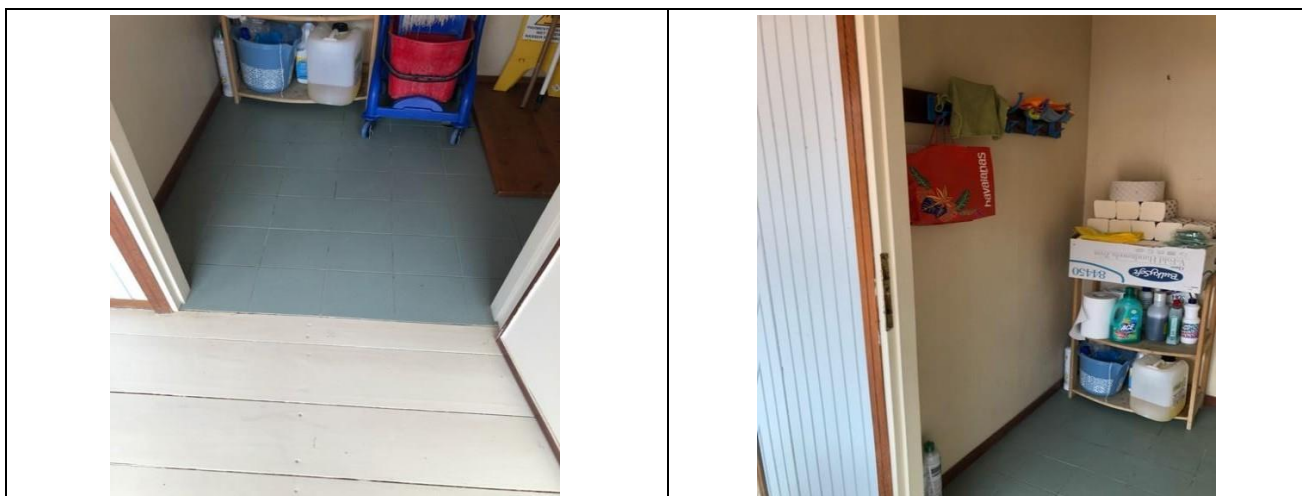


Accessible shower available for guests with reduced mobility	YES in common with the toilet room
Shower type	open-type
Floor-level shower	YES
Shower chair	missing
Grab bar	NO
Presence of shower head or ups and downs	fixed shower head
Electric doorbell/phone	YES
	

Changing room

Accessible changing room available for guests with reduced mobility	YES
Access to the premises	by ramp length 460 cm, width 47 cm, slope 3.7%
Usable door/entrance width	cm 85
Size of the dressing room	width 158 cm and depth 163 cm
Presence of a cot	NO
Coat rack height from the ground	cm 158





Beach

Type of beach	sand
Access to the beach	Flat in the lawn bordered by tiles 60 cm wide and 43 cm long each
Walkway to reach the umbrellas	YES
Type of walkway	wooden
Walkway width	90 cm





<p>Removable Platform between the walkway and the umbrella station to facilitate the passage and parking wheelchair</p>	<p>YES</p>
<p>Amphibious beach chair available for helping people with reduced mobility to enjoy swimming (owned by the establishment or by association)</p>	<p>YES</p>





Children's play area

Children's play area	Accessible to children with reduced mobility
There are games for children with reduced mobility	YES
	

Swimming pool

The property has a swimming pool	NO
----------------------------------	----

Doctors' Offices/Healthcare Facilities

Hospitals near the facility	Ospedale Versilia SS!, 335 Camaiore tel. 0584/6051
-----------------------------	----------------------------------------------------





Other Healthcare Facilities	<p>Emergency medical service Camaio tel. 0584/616775 Distretto Sanitario ASL N. 12 Viareggio Via Sant'Elme, 30 Tel. 058483873</p> <p>Croce Verde Viale Italico, angolo via Risorgimento Tel. 058484013 Free First Aid for white codes Night medical guard Tel. 0584 83896 (h. 20-8)</p> <p>Misericordia Via P. I. da Carrara, 32 Tel. 0584752133/0584 752149</p> <p>Medical service "San Camillo" Nursing Home Via P.I. da Carrara, 37 Tel. 0584 7391</p> <p>Dialysis service c/o Croce Verde Viale Italico, corner of Via Risorgimento Tel.058484013 affiliated with AUSL</p>
-----------------------------	------------------------------------------------------------------------------------------------------------------------------------------------------------------------------------------------------------------------------------------------------------------------------------------------------------------------------------------------------------------------------------------------------------------------------------------------------------------------------------------------------------------------------------------------------------------------------------------------------------------------------

TESTED BY: Handy Superabile Social Promotion Association in summer 2023

